

Non-Point Source Pollution Modeling in Essex Region Watersheds

Tirupati Bolisetti
Dept of Civil and Environmental Engg

NPS Pollutant Modeling and BMP Evaluation

Objectives

- Characterize the non-point source pollutant loadings from the agricultural watersheds
- Identify the areas contributing relatively excessive loadings at the outlet of the watersheds
- Prioritize the sub-watersheds for implementing BMPs
- Evaluate the effect of BMPs in reducing the loadings

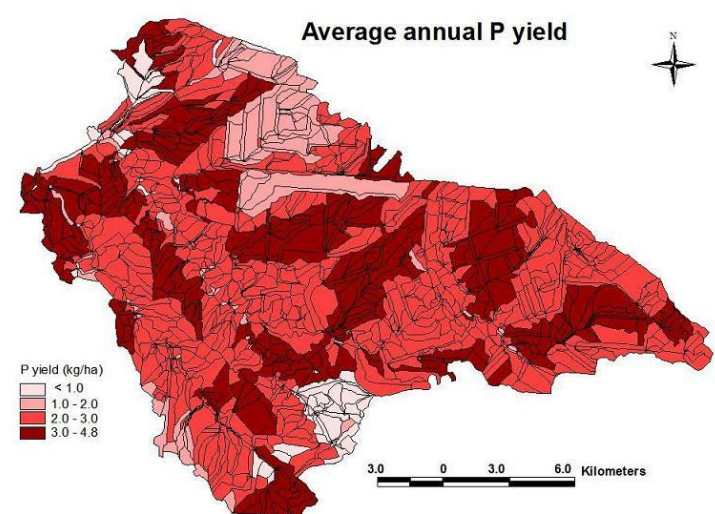
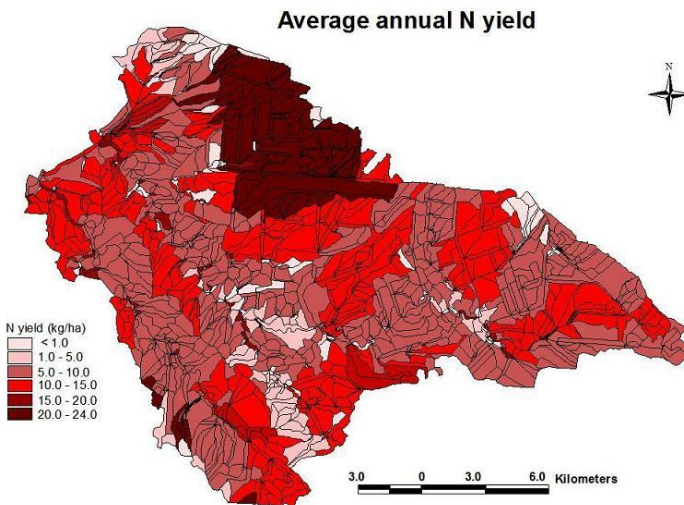
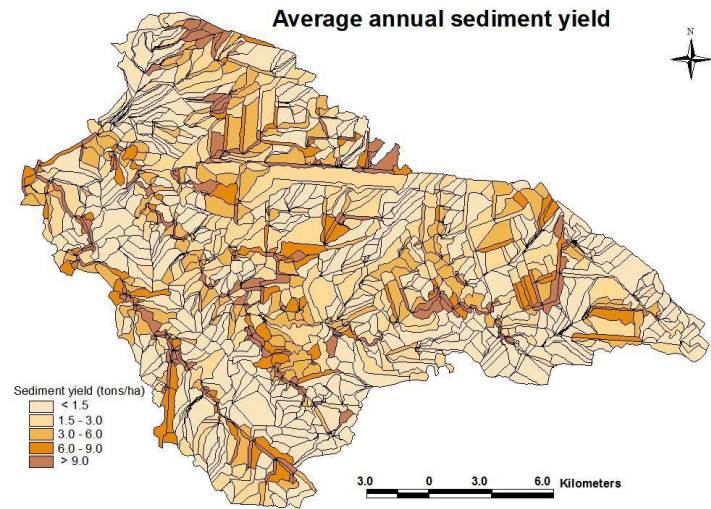
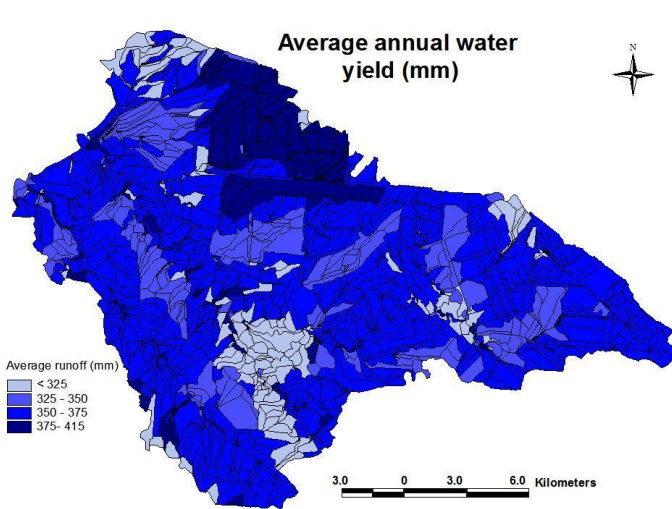
Tools Being Used

- SWAT – Soil and Water Assessment Tool
- AnnAGNPS – Annualised Agricultural Non-Point Source pollutant loading modeling

Watersheds in Essex County



Typical Results – Canard River Watershed



Some Results – Big Creek Watershed

