

OMAFRA Great Lakes Program

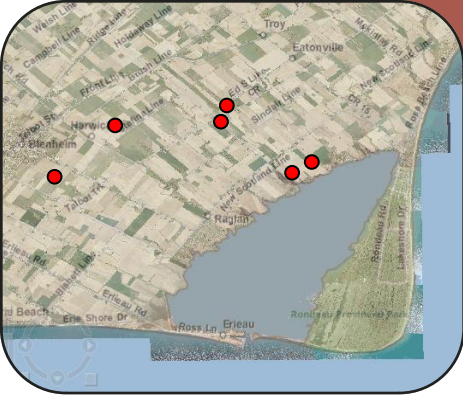
- Part of Canada Ontario Agreement Respecting the Great Lakes Basin Ecosystem 2007-2010
 - also signed by MOE, MNR and six Federal Departments
 - \$2.4 million over three years
- 26 projects – 3 Annexes - Harmful pollutants; Lake and Basin Sustainability; Coordination of Monitoring, Research and Information
 - Projects selected based on: relevance to OGLP priorities, quality of design, likelihood of success, value for money, communication plan, collaboration, future opportunities
- Nutrients/phosphorus a focus in many projects





Great Lakes Phosphorus Forum

- July 28-31, 2009 – Windsor, Ontario
- Gathered together scientists, policy makers and extension professionals in the fields of agronomy, nutrient management, soil science, and water quality to share relevant information on managing non-point source phosphorus losses from agricultural land in the Great Lakes basin
- Held in conjunction with annual meeting of the Organization to Minimize Phosphorus Losses from Agriculture (SERA 17)
- 6 Sessions:
 - Distribution and cycling of P within the Great Lakes
 - Streams and rivers: Conduits, sinks or sources of P?
 - From field to stream – Addressing the gaps
 - Getting to the source of the matter – measuring and mitigating agricultural P sources
 - What additional mitigation tools are needed beyond the P Index?
 - Panel Discussion – Site Assessment Indices – Where to Next?
- 21 speakers, 30 posters, > 100 participants, special issue of Cdn J. Soil Sci
- Proceedings at www.sera17.ext.vt.edu/Meetings/greatlakeforum



Erie Phosphorus-related Projects

- **Big Creek Watershed Plan - Water Quantity, Drainage and Erosion Components**
 - Essex Region Conservation Authority, MOE, University of Windsor
- Agricultural land management and water quality data evaluation in representative agricultural watersheds in the **Grand River and Thames River basins**
 - Soil Resource Group, Grand and Upper Thames CA, U of Guelph
- **Rondeau Bay Watershed** – LiDAR, Agriculture Resource Inventory, Modelling, sediment and nutrient BMP implementation, adoption research
 - OMAFRA, Friends of Rondeau, MNR, Chatham-Kent Drainage Committee, Ducks Unlimited, OSCIA, Stewardship Kent, Lower Thames Valley CA, U of Guelph
- Developing a framework to evaluate effectiveness of land management projects: Non-point nutrient loadings and near shore ecosystem behaviour in **Lake Erie**
 - University of Windsor, Environment Canada, Ohio and US EPA, Lake Erie Millennium Network