





# **Regional Advanced Network Influence on Smart Community Development (In Windsor & Essex County)**

***Connecting Windsor-Essex™***

**November 4, 2005**

**Todd Sands, Ph.D**

**Centre for Smart Community Innovation**



"Community is the 'human dwelling place' which includes not just the human population, but the hills, mountains, rocks, trees and clouds."

- Tessie Naranjo  
Santa Clara Pueblo,  
New Mexico

## The World Foundation for Smart Communities

*Linking local communities to the Global Information Economy*

### Welcome to Smart Communities

The World Foundation for Smart Communities is a nonprofit educational organization founded to promote the concept and facilitate the implementation of "smart communities" -- communities using information technology as a catalyst for transforming life and work to meet the challenge of the new millennium.

*Learn more about the [Foundation](#) -->*



*["San Diego: City of the Future - The Role of Telecommunications." Report of the Mayor's Advisory Committee on The City of the Future, San Diego, March 11, 1994.](#)*



*["The Creative Community - Forging The Links between Art Culture Commerce and Community" one of a series of white papers on Cities of the Future.](#)*

### Featured Articles

#### ***NURTURING A CREATIVE COMMUNITY*** by John M. Eger

"Cities across the globe are still struggling to reinvent themselves for the post-industrial economy and society foreshadowed in the 1960s by economists Fritz Malcop and Marc Porat, and by sociologist Daniel Bell..."

"In less than 10 years, the mammoth global network of computer systems collectively referred to as the Internet has blossomed from an obscure tool used by government researchers and academics into a worldwide mass communications medium"  
[Read more -->](#)

#### ***Smart Growth and the Urban Future*** by John M. Eger

"This growing concern with urban sprawl,



<a href="#">Français</a>	<a href="#">Contact Us</a>	<a href="#">Help</a>	<a href="#">Search</a>	<a href="#">Canada Site</a>
<a href="#">New @ SC</a>	<a href="#">Smart Community Info</a>	<a href="#">Demonstration Projects</a>	<a href="#">Smart Start</a>	<a href="#">High Speed</a>
<a href="#">Media Centre</a>			<a href="#">Smart Tools</a>	<a href="#">International</a>



# Smart Communities

<http://smartcommunities.ic.gc.ca/>

[Upcoming Events](#)

[How to Use this Site](#)

[Site Map](#)

[F.A.Q.s](#)

[Message from the Minister of Industry](#)

**Keyword Search**

## What is a Smart Community?

It's a community with a vision of the future that involves the use of information and communication technologies in new and innovative ways to empower its residents, institutions and regions as a whole.



**Smart Community Info**

Overview and history of the program



**Smart Start**

Help in Getting Started



**Smart Tools**

Resources to meet your Smart Community needs



**Demonstration Projects**

Sharing visions, lessons and best practices



**Smart International**

What's going on around the world



**Going High Speed**

Broadband made easy





Unlike towns and cities of an earlier era, built along railroads, waterways, or interstate highways, smart communities are built on information highways -- broadband systems of communications connected to every home, office, school, library and health care facility in the region and through the World Wide Web, to millions of other institutions across the globe.

Most striking is that these information-age metropolises are not cities or counties or townships in the usual sense. They are instead powerful regional economies built on a shared sense of mission and a recognition of the values of collaboration and cooperation.

Their future is not dependent upon cyberspace, the Internet or the World Wide Web. Smart communities are real places inhabited by real people whose interests and needs have changed as all things are changing or must change in the face of a dramatic shift in the basic structure of the world's economy and society in the Digital Age.

Smart Community Foundation, 2005



# What does a Smart Community look like?

Every smart community is unique, because its characteristics are based on the community itself. One common denominator is that successful smart communities are the result of a coalition of business, education, health, government and individual citizens. A successful smart community can be built from the top down, or as a grassroots effort, but active involvement from every sector of the community is essential. This united effort creates a synergy which allows individual projects to build upon each other for faster progress, resulting in the involved, informed and trained critical mass necessary for transformation of how the entire community carries out its work.

*From Smart Communities Guidebook, Building Smart Communities Implementation Guide, 2005*



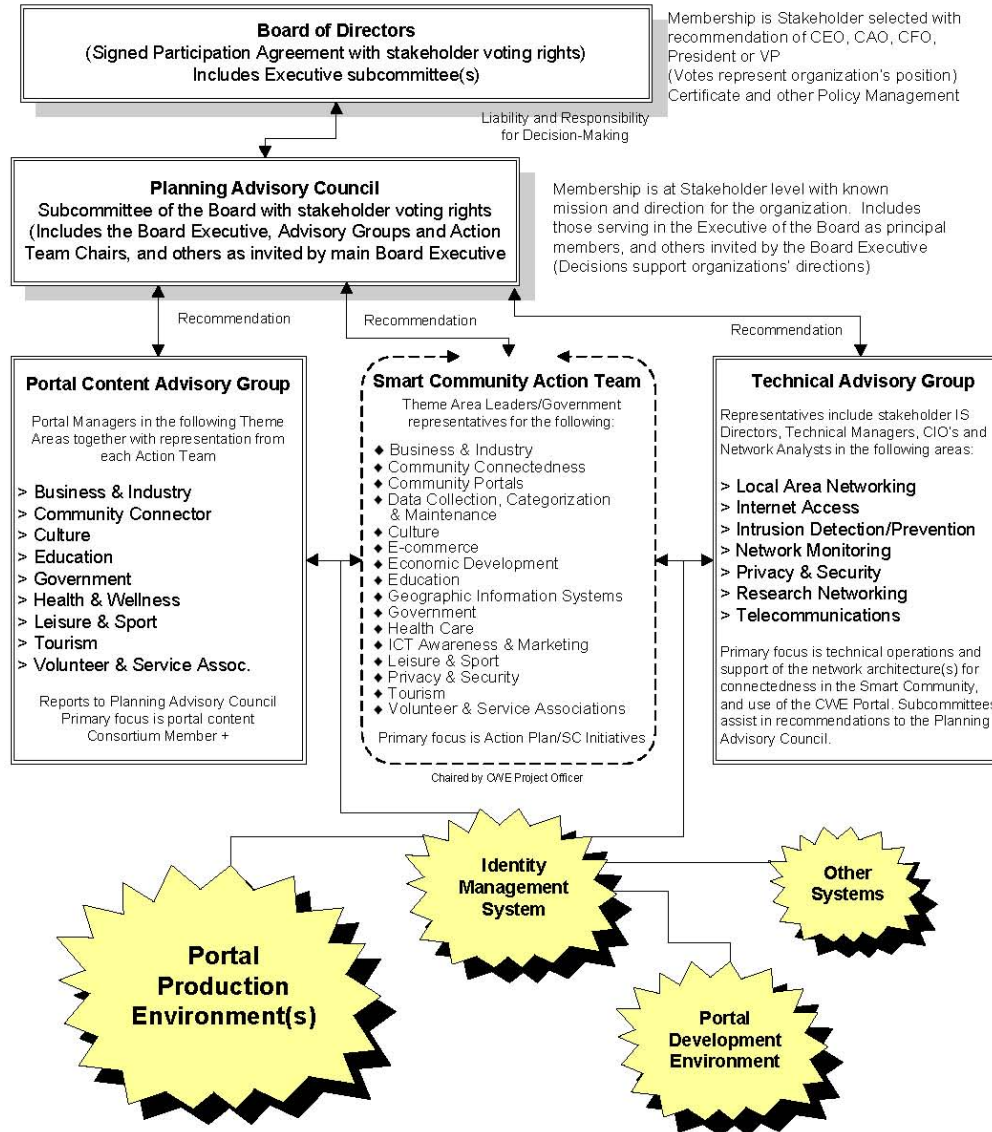
## Five Key Components:

- ❖ **Smart Organizations**
  - ❖ **Smart Infrastructure**
  - ❖ **Smart Applications (Portal)**
  - ❖ **Smart Access (high speed accesses)**
  - ❖ **Smart Results**
- 
- ❖ **Difficult to separate any of the five key pieces**
  - ❖ **Difficult to sustain in isolation**



# Vision

**“The Windsor and Essex County Smart Community, through its *Connecting Windsor-Essex*<sup>TM</sup> activities, will provide participant organizations, entities, families and individuals with governance, community engagement, access to infrastructure & on-line services, and smart results to demonstrate new opportunities, well-being, and connectedness, to improve the quality of life in learning, work and play.”**





# Community Engagement

- ❖ **Any organization in the community can become a Participant in the Joint Venture with the University**
- ❖ **Theme Area visioning statements developed with consultation from community leaders**
- ❖ **Strategic Plan, Action Plan, Gap Analysis completed and presented to the community**
- ❖ **89 opportunities presented from community consultations and these are being reviewed**



# New Trademarks

❖ ***Connecting Windsor-Essex™***

(Where application meets community)

❖ ***Community Connector™***

(Where community meets community)

❖ ***Innovation Annex™***

(Where theory meets application)

❖ ***WEDnet™***

(Where application meets network)



# Smart On-line Services

- ❖ **Identity Management System with 2 factor certificate based (X.509v3) PKI compatible with GO-PKI from Government**
  - Includes a Certificate Authority (CA infrastructure)
- ❖ **One official information source for the user community that can utilize the secure access capability**
- ❖ **On-line training tools inherent in the technology**



- Business & Industry
- Culture
- Education
- Government
- Health & Wellness
- Leisure & Sports
- Tourism
- Volunteer & Service Associations

# Connecting Windsor-Essex™ @ the speed of life®

Welcome to *Connecting Windsor-Essex™*... your official source for key information, services and contacts.

Wednesday, July 6, 2005

» FIRST VISIT? ... click here » Login

Comment | Help

### News & Conditions

Windsor  
forecast

Today 27/16°C

### Lottery Numbers

### Movie Showtimes

### Search Community Info

#### Announcements

- Windsor & Essex County Gas Prices Now Availab...
- Movie Showtimes Now Available on Portal...
- Mad Science Summer Camp...
- Summer Programs at Windsor Public Library...
- more Announcements...»

### Events Calendar

- An Evening with the Classics...
- Charity Pasta Night...
- Crafty Creations...
- Puppets by D20VUS...
- Take-A-Kid To The Course...
- Click here to view Events...»

### Community Connector™

- The Demo Room. Access to discussion, event calendars and resources for Windsor-Essex groups.
- Click here to enter the Demo Room.

<http://www.windsor-essex.info>



# Connecting Windsor-Essex™ @ The Speed of Life!®

Welcome to the *Connecting Windsor-Essex™* Registered User application process.

In this first step you need to apply to be a Registered User of the *Connecting Windsor-Essex™ Community Portal*. This registration process will collect some information about you, and verify that information. When we have confirmed your identity, you will receive an email with further instructions about how to complete the process.

## Application

During the registration process, we will need to authenticate you against the information that you supply. If you are affiliated with one of the Participant organisations, and they have agreed to be involved in authentication, it will simplify the process.

I am affiliated with one of the following Participants

Please select...

Error Levels changed to: debug



Industry  
Canada

Industrie  
Canada



© 2004. University of Windsor.

| [About Us and Contacts](#)

| [Policies](#)

| [Disclaimer and Privacy](#)



<http://www.uwindsor.ca/csci>



© 2005. University of Windsor. All Rights Reserved.

Connecting  
Windsor-Essex™  
@ The Speed of Life!®



# Connecting Windsor-Essex @ The Speed of Life!

[Home](#)

■ sandstoddpdk |

[New...](#) [Edit](#) [Check Out...](#) [Copy](#) [Move](#) [Delete](#)

- Welcome
- Committees:
- Committee Chair Requests:
- Portal Roles:
- IDMS:
- Training:
- Library
- Customize
- Index
- Members
- Portal Launch Archive:
- Chat
- Search
- News: Daily | Weekly
- Room Map
- My Places
- Help

[Notify](#) [Print](#)

## Welcome to the Information Centre for *Connecting Windsor-Essex*

Inside, you will find information relating to one of three main areas:

1. Administration (includes Rooms for each major Advisory Group)
2. Training
3. Technical Notifications

General information relating to the project is available without entering any of the more detailed areas. RFP's/RFI's, milestone reports, Partner Proposals and general discussion can be accessed through the menu on the left side of the screen. In addition, a calendar is provided to highlight dates that all partners should be aware of.

Please note that your access rights for your identity may only provide you with access to a portion of this resource. If you have multiple identity assignments for different roles for the *Connecting Windsor-Essex* portal, please ensure you are attempting to access the resources using the appropriate identity. If you feel that you should be granted access to additional segments of this resource, please submit a comment to the *Connecting Windsor-Essex* [Project Manager](#) .

### Next steps

- > Click any link in the table of contents to start working
- > Click Help for more information

[New...](#) [Edit](#) [Check Out...](#) [Copy](#) [Move](#) [Delete](#)

[new...](#) | [edit](#) | [check out...](#) | [copy](#) | [move](#) | [delete](#)

■ sandstoddpdk |



welcome

- [board room:](#)
- [coordinator reports](#)
- [discussion area](#)
- [document library](#)
- [calendar](#)
- [tasks](#)
- [index](#)
- [customize](#)
- [members](#)

search:



[advanced search](#)  
[news: daily](#) | [weekly](#)

[work offline](#) | [chat](#) | [notify](#) |  
[print](#) | [help](#)

[my places](#) | [home](#)

**Welcome**

This is represents the home page of the ARGI Board of Directors CWE Portal Place. Board Members and the Asthma Coordinator will see this page when they first arrive. Board Members will also have access to an Inner Room, the "Board Room", accessible from a link on the left hand panel, that is not accessible to the Asthma Coordinator. A separate folder, "Coordinator Reports", has been created for the Asthma Coordinator to post monthly reports accessible to all Board members.

A task list is also included, so that tasks of Directors can be seen by both the Directors and the Asthma Coordinator, and there is also a separate task list inside the Board Room for items specific only to the Board.

This ARGI-BoD Portal Place should facilitate secure access of the Coordinator to post reports and interact more directly with the ARGI Board.

A Calendar is included, so that activities of the Board, or the strategy can be recorded, meeting dates, etc...

A Training Manual on the use of the Place is attached. Information can also be obtained by viewing "Help" from the left hand panel. Access levels are set to "author", meaning that you should have full editing rights on your own postings, and the ability to author all types of forms and pages within the Place.

Questions or additional access rights should be sent to sandstoddpdk using [Portal Mail](#). Todd is a Director of ARGI and volunteer manager of this CWE Portal place for ARGI.

You can download any of the files below by dragging them to your Windows desktop. To open a file for reading, double-click it.



File Name	Size	Modified
Quickplace Training Document.pdf	1584KB	12/01/2004 3:51:36 PM



# Smart Infrastructure

- ❖ **3<sup>rd</sup> generation Portal info-structure**
  - Implemented and expanding
- ❖ **High speed network with redundant Internet interfacing to government networks (INP, SSHA, SDMT)**
  - Implemented and expanding
- ❖ **High speed home Internet access for employees of Participant organizations**
  - Implemented and expanding
- ❖ **Handheld-mobile access – BlackBerry**
  - Using the portal in the communication strategy



# ORION Point of Presence @ WEDnet



**Connecting  
Windsor-Essex™  
@ The Speed of Life!®**



**Connecting  
Windsor-Essex™**  
**@ The Speed of Life!®**



## High-Speed Home Access Internet Project

A Smart Community has residential high-speed home Internet access readily available at an affordable price. This offer is for eligible employees of participating WEDnet™ Members only, and in areas where it can be supplied by the service providers. There are two (2) types of high-speed access available. Please check the service availability in your area from the providers by clicking on each of these 2 buttons:

[Check Cable Availability](#)

[Check DSL Availability](#)

If you cannot obtain service by one of these providers, please click on the following button to provide information that may assist in servicing your location in the future:

[No Service Availability](#)

If service(s) is available in your area, you will need to make a decision on which service you wish to order. Do not order both services unless you want to install both services. If you are an existing high-speed Internet customer of either COGECO or Primus, you must order the service through this process to take advantage of this offer. If COGECO or Primus high-speed Internet is already installed in your home, you will not be charged for installation (if applicable).

<http://www.uwindsor.ca/csci>



# Smart Results

- ❖ Windsor and Essex County have a Smart Community. It's called *Connecting Windsor-Essex™*, and the intent is to help grow the capability of our online community, and the organizations that have physical presence in the area. It involves researchers, students, citizens and networks!
- ❖ To enhance the capability of the people with the organizations to work and interact in secure online environments with others
- ❖ There is a 3<sup>rd</sup> generation Portal to serve as the official information source for users
- ❖ Policies are in place to govern the Portal and its use. Network (and WEDnet have passed Threat Risk Analysis and Privacy Impact Analysis requirements of Management Board Secretariat of Ontario)

The logo features the letters 'W' and 'E' in a stylized, overlapping font. The 'W' is blue and the 'E' is orange, both set against a green circular background with a white starburst effect.

# Smart Results

- ❖ **Windsor and Essex County have a Smart Community. It's called *Connecting Windsor-Essex***
- **It involves researchers, students, citizens and networks!**

**Question 1:**

**Why would you want to go there?**

**It's takes research to know!!!!**



- ❖ **To enhance the capability of the people with the organizations to work and interact in secure online environments with others**

<http://web4.uwindsor.ca/csci>

<http://www.peoplechef.com>

## **PeopleChef story**

### **Question 2:**

**How would the Innovation Annex be able to help PeopleChef?**



- ❖ **There is a 3<sup>rd</sup> generation Portal to serve as the official information source for users**

## **Question 3**

**What is 2-factor authentication and why is it important?**



# Questions

<http://www.uwindsor.ca/csci>